



TRIOLE INVESTMENTS LTD.

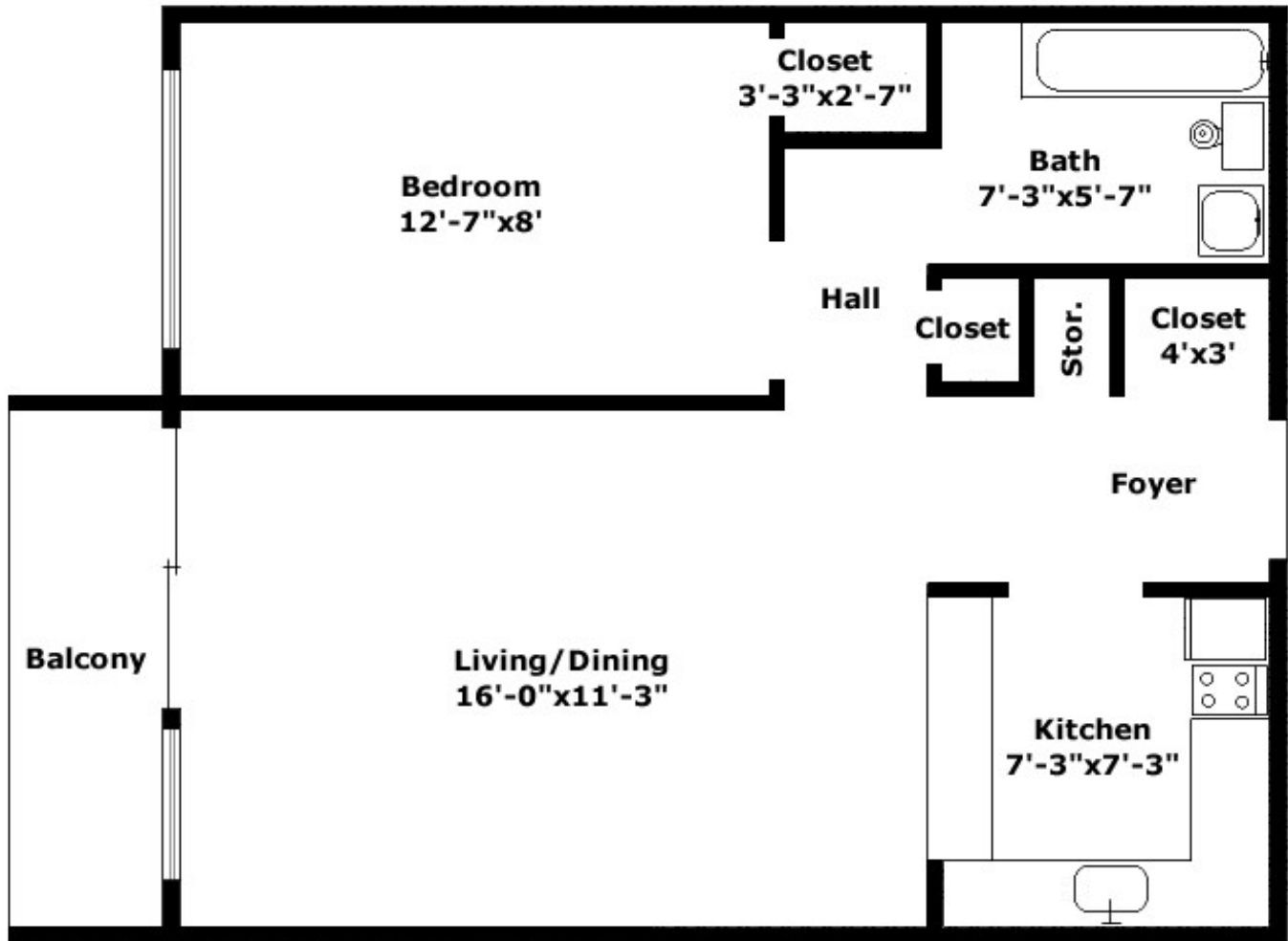
Elizabeth Apartments
88 Somerset Street West (@ Cartier)
Ottawa, Ontario
K2P 0H6

Phone: 613-232-4584

Fax: 613-235-9616

E-mail: elizabeth@trioleinvestments.com

Website: www.trioleinvestments.com/elizabeth



The Windsor

1 Bedroom, 470 sq.ft. - From \$875/month*

* Parking Extra | Prices are subject to change without notice | Floorplans are not to scale and provided for reference only.



TRIOLE INVESTMENTS LTD.

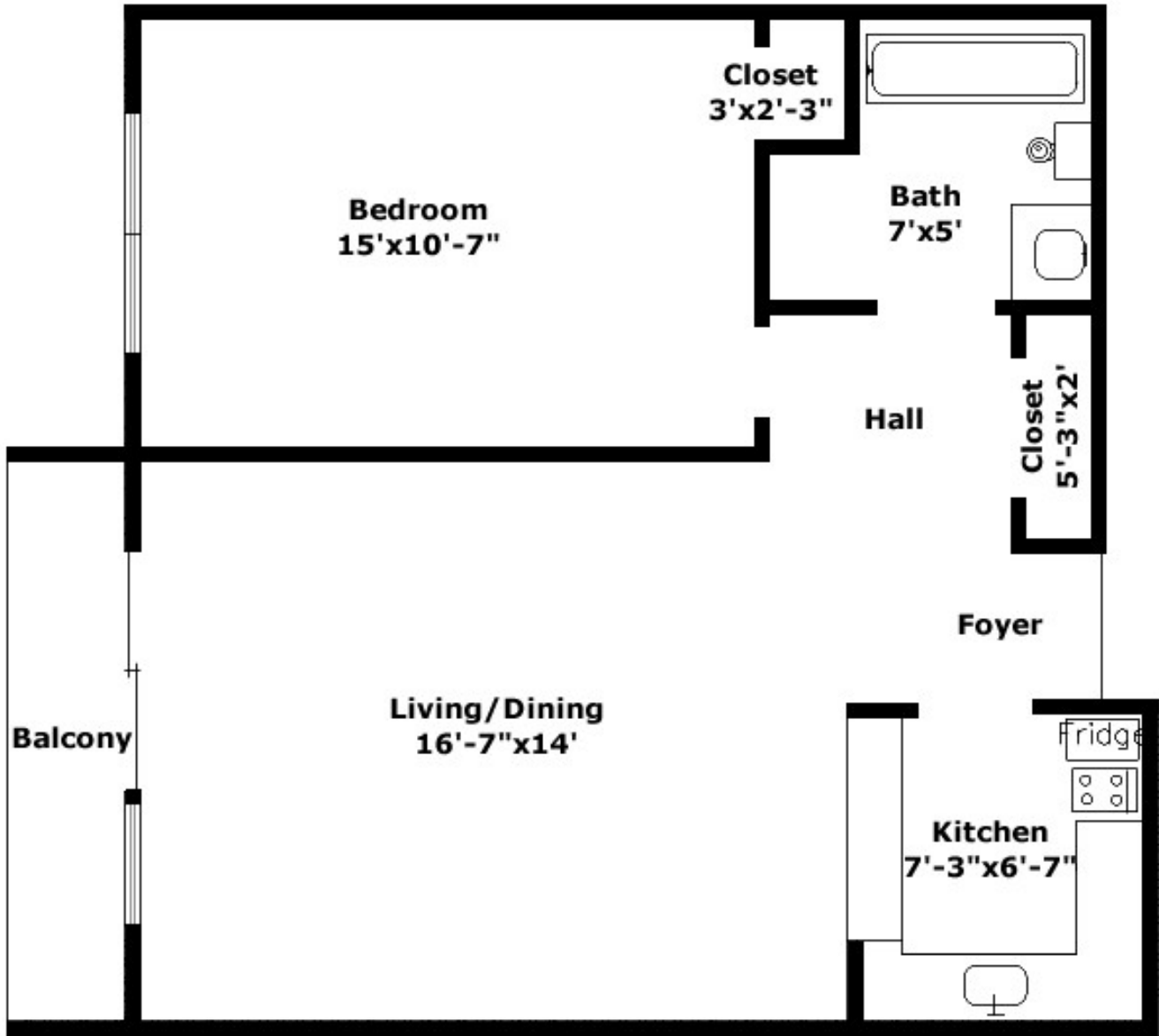
Elizabeth Apartments
88 Somerset Street West (@ Cartier)
Ottawa, Ontario
K2P 0H6

Phone: 613-232-4584

Fax: 613-235-9616

E-mail: elizabeth@trioleinvestments.com

Website: www.trioleinvestments.com/elizabeth



The Victorian

1 Bedroom, 570 sq.ft. - From \$975/month*

* Parking Extra | Prices are subject to change without notice | Floorplans are not to scale and provided for reference only.



TRIOLE INVESTMENTS LTD.

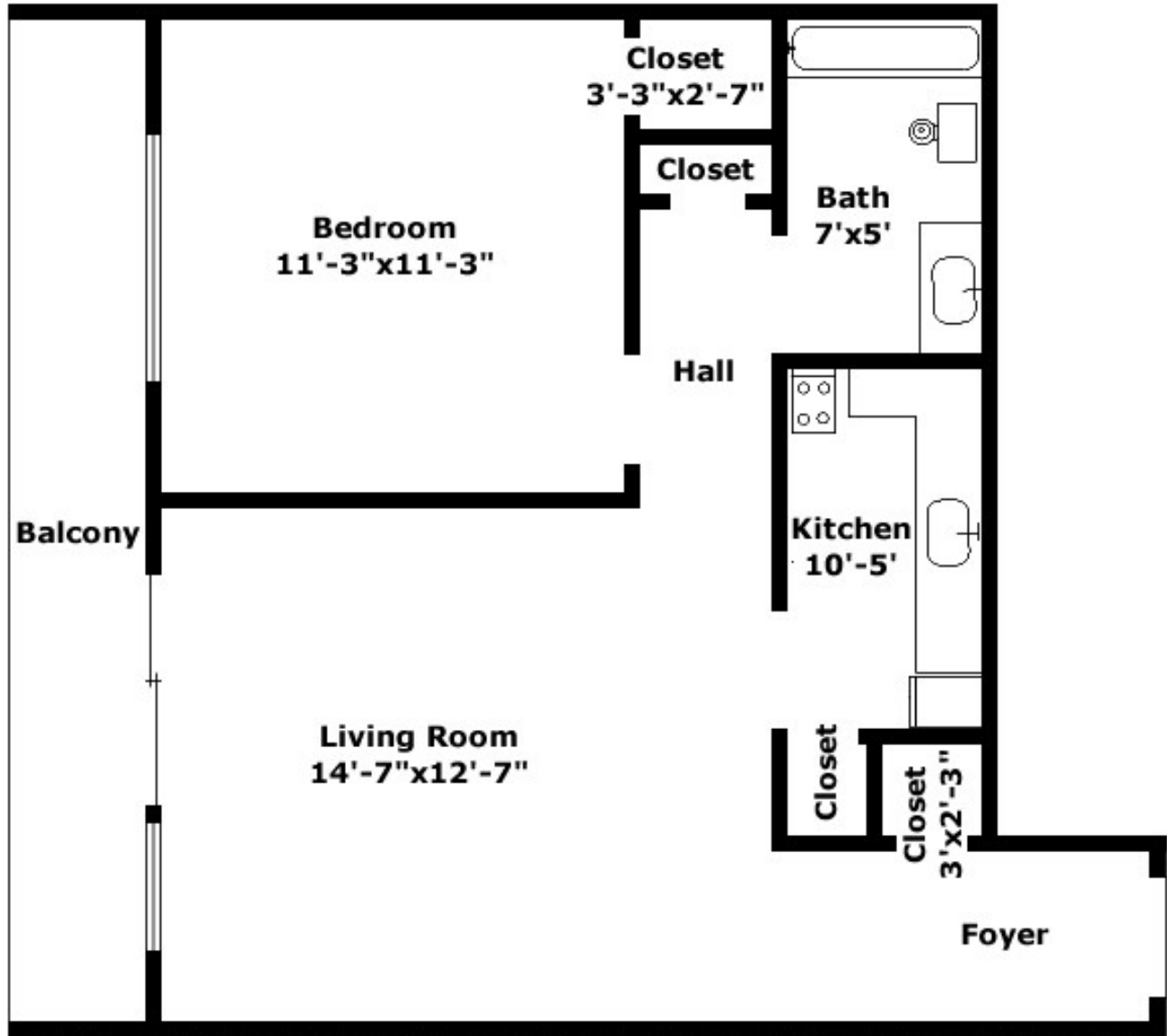
Elizabeth Apartments
88 Somerset Street West (@ Cartier)
Ottawa, Ontario
K2P 0H6

Phone: 613-232-4584

Fax: 613-235-9616

E-mail: elizabeth@trioleinvestments.com

Website: www.trioleinvestments.com/elizabeth



The Kensington

1 Bedroom, 670 sq.ft. - From \$995/month*

* Parking Extra | Prices are subject to change without notice | Floorplans are not to scale and provided for reference only.



Elizabeth Apartments
88 Somerset Street West (@ Cartier)
Ottawa, Ontario
K2P 0H6

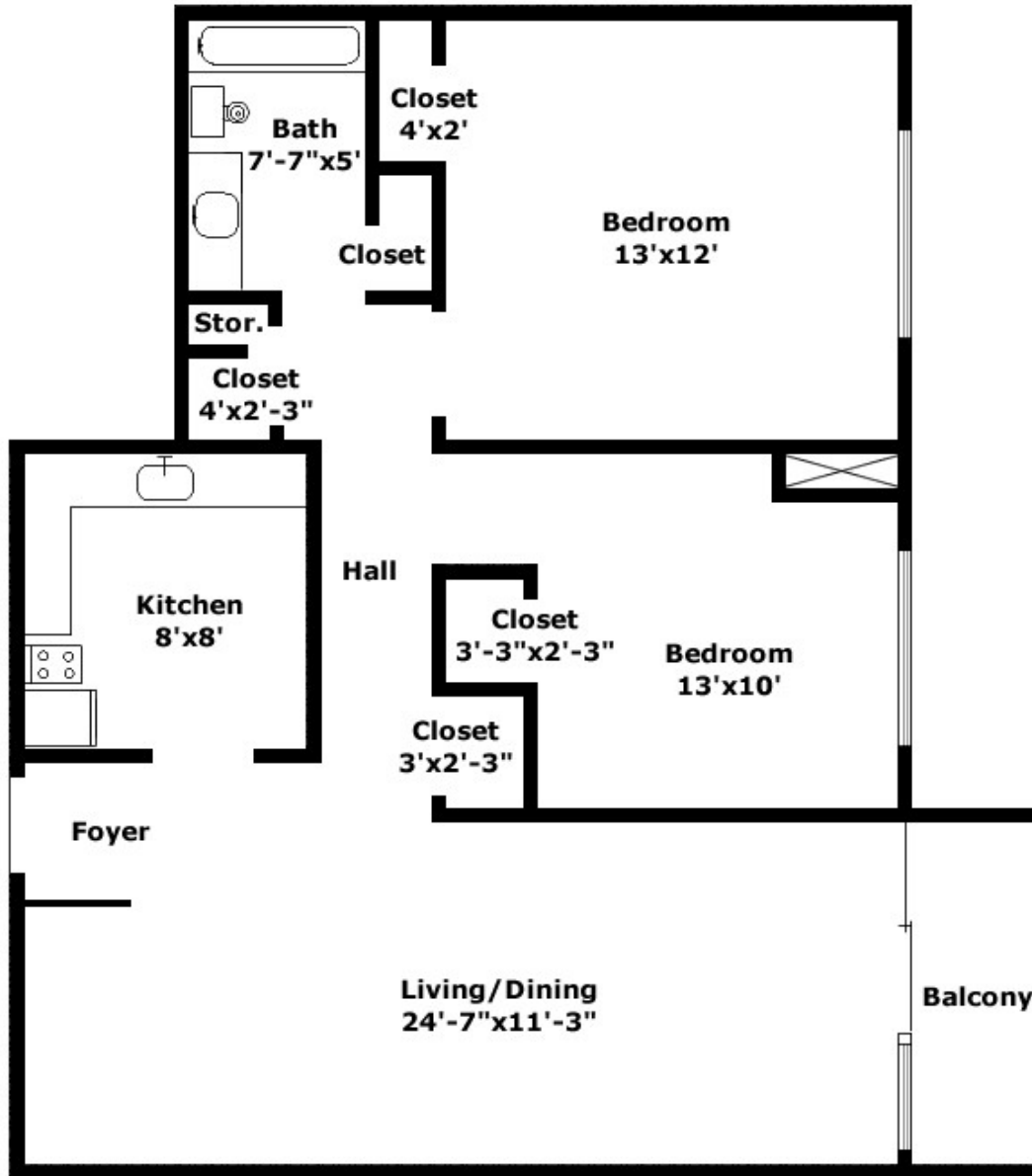
Phone: 613-232-4584

Fax: 613-235-9616

E-mail: elizabeth@trioleinvestments.com

Website: www.trioleinvestments.com/elizabeth

TRIOLE INVESTMENTS LTD.



The Balmoral

2 Bedroom, 830 sq.ft. - From \$1350/month*

* Parking Extra | Prices are subject to change without notice | Floorplans are not to scale and provided for reference only.